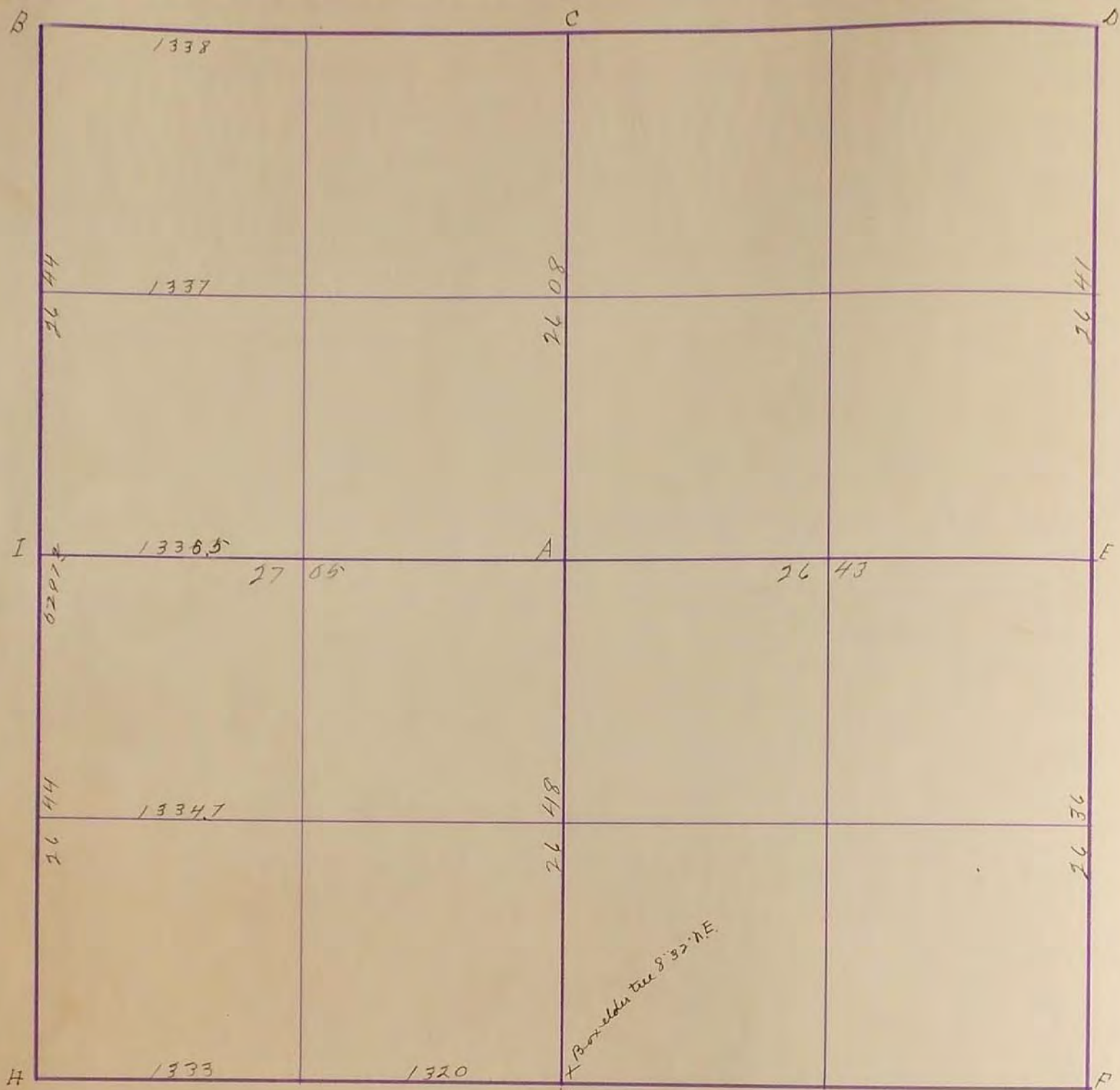


SURVEYOR'S RECORD

Section 30

Township 106

Range 43



- A. Stone
- B. Cor established Previous
- C. Gov. corner
- D. " "
- E. " "
- F. " "
- G. " "
- H. Stone
- I. " "

- "1934"
- "G" Concrete Stone: R.P. Tack in Cor. fence post SW 44³: R.P. Tack in Cor. fence post SE 43³: R.P. Tack in Cor. fence post North 34⁰
- "H" Concrete Stone: R.P. Tack in Cor. fence post SW 44³: R.P. Tack in Cor. fence post NW 48³: R.P. Tack in Cor. fence post SE 49³. F.R. March
- JULY 1936
- "B" R.P. Edge of Steel Corner Post N.E. 33.8
- "G" R.P. Tack in Corner Fence Post N.W. 47.9.
- "I" Hub N.E. 45.2, Hub S.E. 45.0

J.W. Woolstone soft

Apr. 20-1901

- B. old corner
- C. gov cor
- D. gov cor
- E. gov. cor.
- F. gov cor.
- G gov. cor. cottonwood 13 43 S.E.
- H Established cor.
- I " "

J.W. Woolstone soft

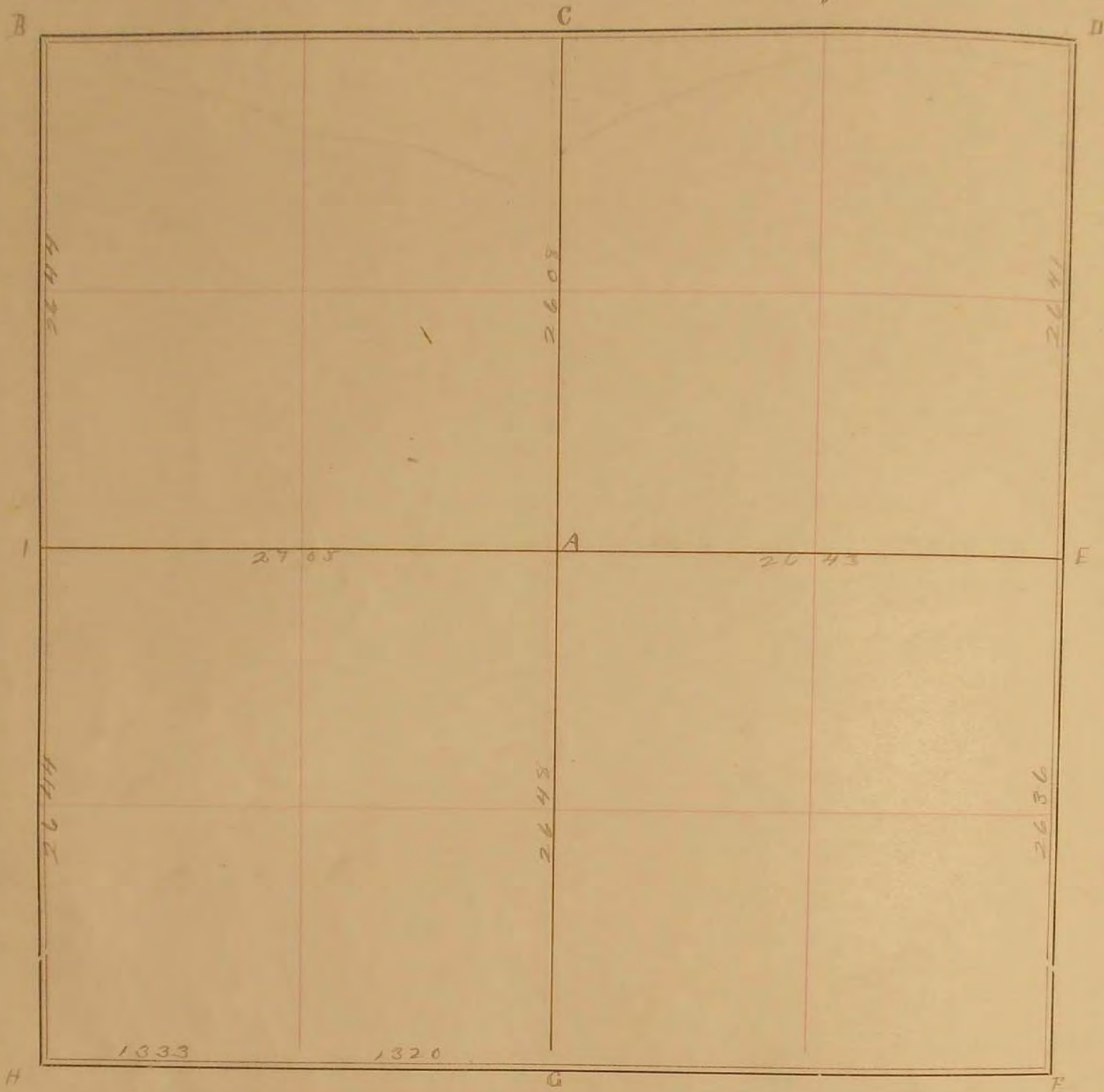
30
31

SURVEY No. _____

Section 30

Town 106

Range 43



FIELD NOTES.

- A Stone
- B cor. established previous,
- C low corner
- D " "
- E " "
- F " "
- G " " collation 12° 45' S. E.
Byssides 8° 37' N. E.
- H Stone

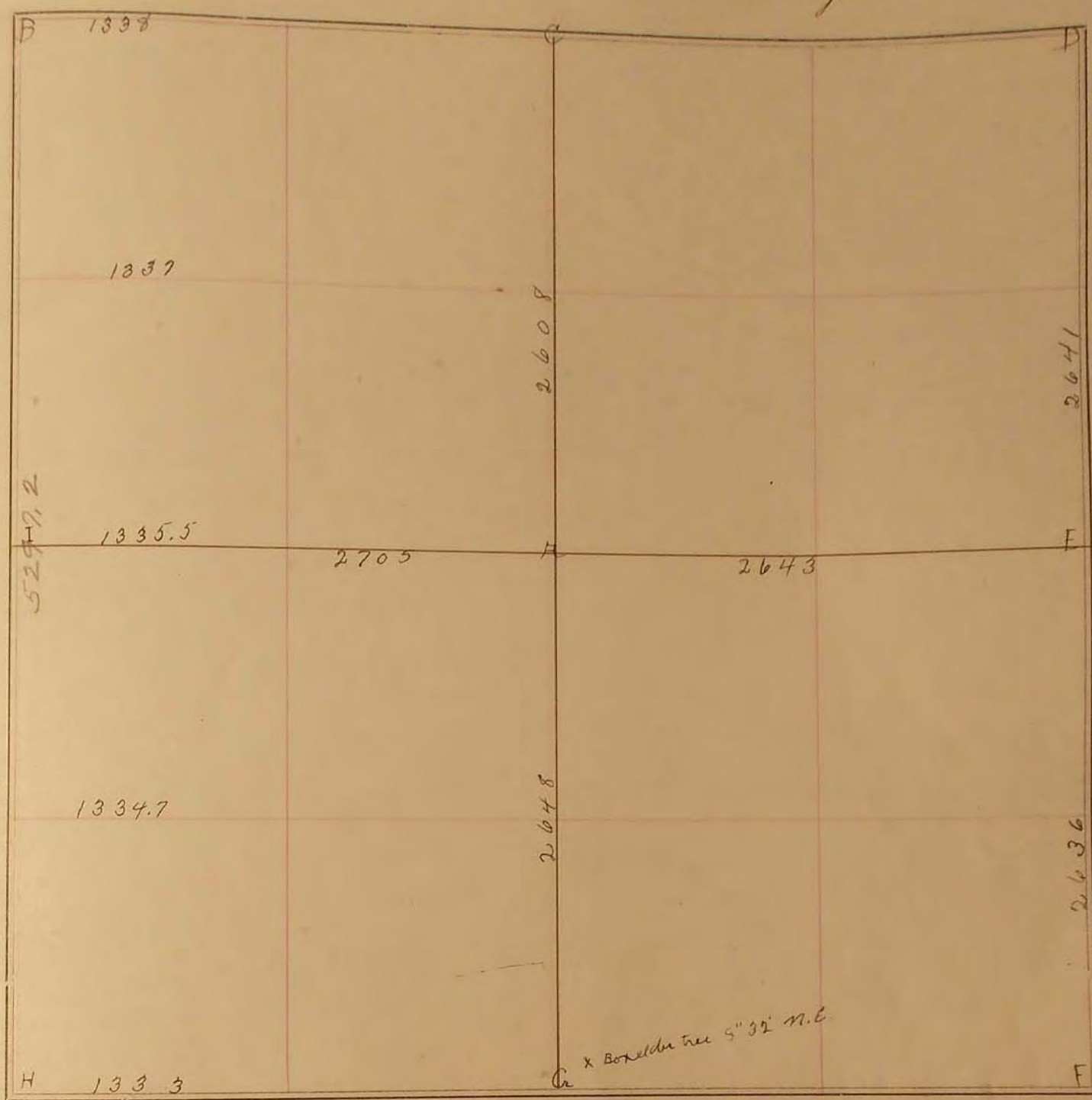
J. W. Woodstein draft

SURVEY No. 1111

Section 30

Town 100

Range 43



FIELD NOTES.

April 20, 1901.

- B. old cor.
- C. Gov. Cor.
- D. Gov. Cor.
- E. Gov. Cor.
- F. Gov. Cor.
- G. Gov. Cor. cottonwood tree 12" 43' S. E.
- H. Establish a corner.
- I. " " "

J. W. Woolstenhulme